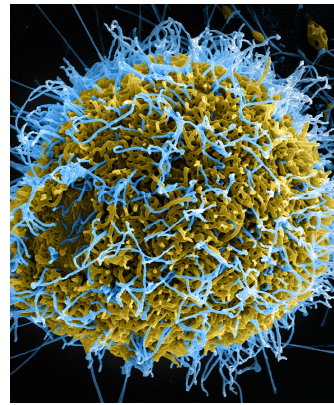




# PUREAIR

Improve indoor air quality for employees and customers



## INDOOR AIR QUALITY

The Airius PureAir Series creates an aggressive advanced oxidation atmosphere to improve indoor air quality (IAQ) reducing viruses, bacteria, gases, VOCs, mold and odors (surface and airborne) up to 99.99%. The photohydroionization (PHI) technology creates hydroperoxides. Ionized-Hydro-Peroxides are very effective at destroying harmful microbials in the air and on surfaces. As oxidants, they do this by either destroying the microbe through a process known as cell lysing or by hanging its molecular structure and rendering it harmless.

## WHERE WE HELP

- › High traffic areas
- › Areas susceptible to odors, mold, viruses or bacteria
- › Environments looking to improve IAQ

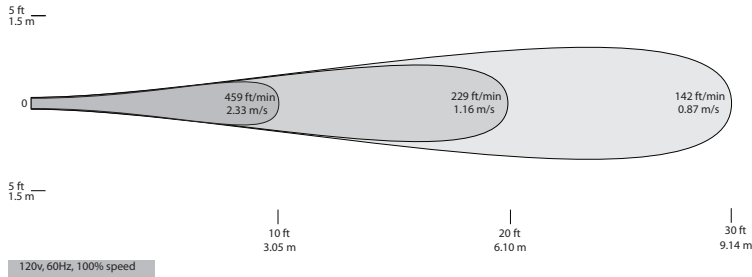
## Features

- › Basic or premium EC motors
- › 2 styles for open and dropped ceilings
- › 5 inch PHI (short length nozzles)
- › 9 inch PHI (standard length nozzles)
- › Easy installation in new construction or retrofits
- › Broad spectrum 100-300 nm HE/UV
- › UV bulb encased in a protective poly tube
- › 3-year fan warranty | 2-year PHI warranty
- › Estimated life of 25,000 hours, continuous runtime
- › Made in the U.S.A.

## Optional

- › Intake grille
- › Speed controls not recommended for use with this product

PHI-Cell® trademark, Photohydroionization® trademark, are trademarks or registered trademarks of RGF Environmental Group, Inc. in the United States and/or other countries.



PHI Coverage Guidelines			
Ceiling Height (ft)	Max Coverage 5 inch PHI (ft²)	Max Coverage 9 inch PHI (ft²)	Recommended Size (PHI, Nozzle)
~10	960	5200	5 inch PHI, Short
~15	640	3470	5 inch PHI, Short
~25	380	2080	9 inch PHI, Standard

**Housing:** PC/ABS, UL 94 5VA flame resistance.

**Motor:** 228mm, single phase, shaded pole, axial motor. Motor is thermally protected. Operating temperature: -4° F (-20° C) to 158° F (70° C). No lubrication required. Bearings are sealed.

**Power Cord:** 6 foot cord and plug provided for 120V fans.

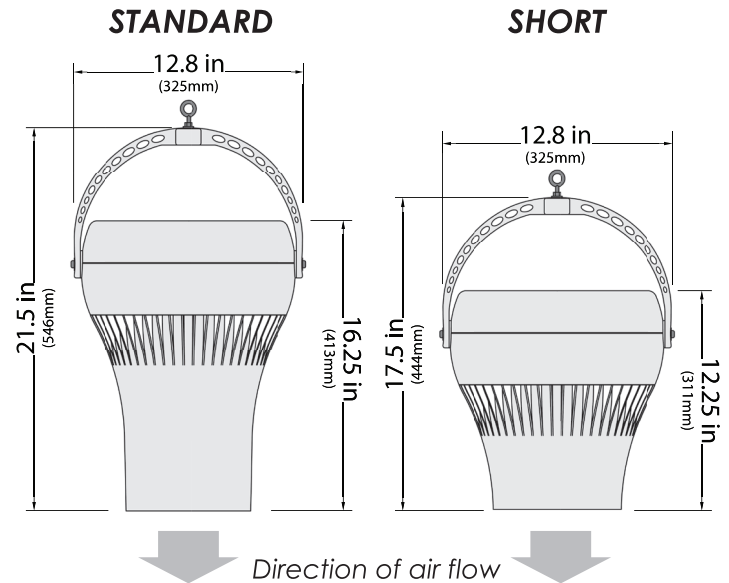
**Control Input:** Fixed speed.

**Stator:** Patented multi-vane stator significantly increases air throw for maximizing performance.

**PHI Cell:** 5 inch cell for short nozzle fans, 9 inch cell for standard nozzle fans

**Safety Cable:** 6' length steel cable (fastened to body)

**Warranty:** 3 years parts and workmanship for fan  
2 years parts and workmanship for PHI cell



## Technical Specifications

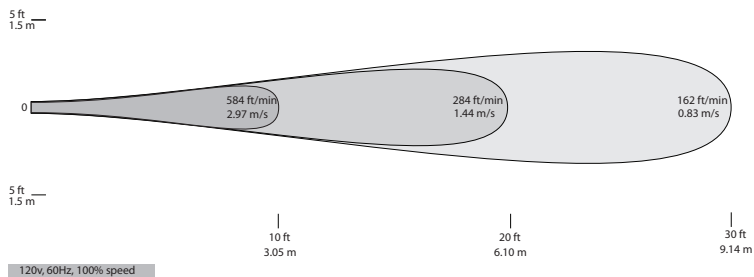
Model	Input Power, 1 Ø	Amps	Watts	RPM	dB(A) <sup>1</sup>	Weight	Colors	PHI
A-15-SP-STD-120-X-PHI	120VAC, 60Hz	0.26	28	1057	33, 27, 23	9 lbs.	X = Off white (W) or black (B)	9 in.
A-15-SP-SH-120-X-PHI	120VAC, 60Hz	0.26	27	1057	33, 27, 23	7 lbs.	X = Off white (W) or black (B)	5 in.

(1) Calculated sound pressure at 5, 10 and 15 foot distances based on non-reflective area. 47.3 dB(A) Sound Power Level, designed to meet ISO 3744 - engineering grade precision for determining sound power. Data independently verified by third party. Tests performed in-unit.

## Factory Installed Options

Item	Description
GUARD25	Intake grille: Phosphated steel coated in black plastic
BABS	Black ABS housing upgrade for increased chemical resistance. Applications such as machine shops or pools.

<b>Model:</b>	<b>Qty:</b>
Controls/Options:	Qty:



PHI Coverage Guidelines			
Ceiling Height (ft)	Max Coverage 5 inch PHI (ft²)	Max Coverage 9 inch PHI (ft²)	Recommended Size (PHI, Nozzle)
~10	960	5200	5 inch PHI, Short
~15	640	3470	5 inch PHI, Short
~25	380	2080	9 inch PHI, Standard

**Housing:** PC/ABS, UL 94 5VA flame resistance.

**Motor:** 228mm, single phase, shaded pole, axial motor. Motor is thermally protected. Operating temperature: -4° F (-20° C) to 158° F (70° C). No lubrication required. Bearings are sealed.

**Power Cord:** 6 foot cord and plug provided for 120V fans.

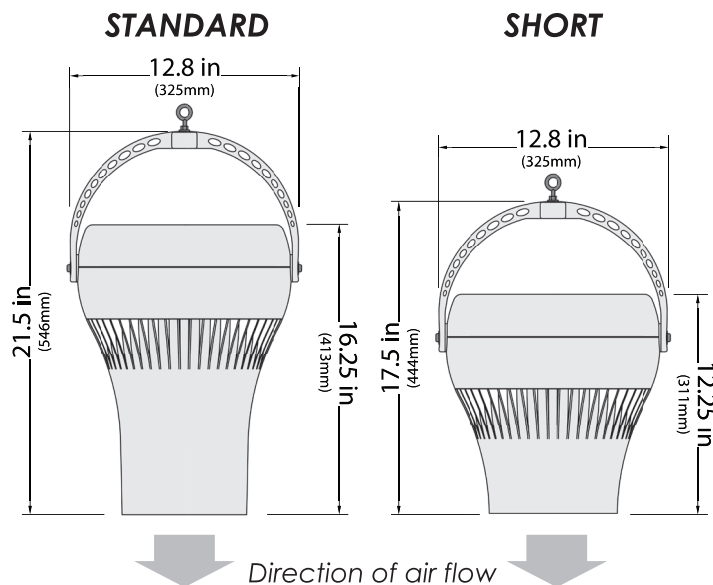
**Control Input:** Fixed speed.

**Stator:** Patented multi-vane stator significantly increases air throw for maximizing performance.

**PHI Cell:** 5 inch cell for short nozzle fans, 9 inch cell for standard nozzle fans.

**Safety Cable:** 6' length steel cable (fastened to body).

**Warranty:** 3 years parts and workmanship for fan.  
2 years parts and workmanship for PHI cell.



## Technical Specifications

Model	Input Power, 1 Ø	Amps	Watts	RPM	dB(A) <sup>1</sup>	Weight	Colors	PHI
A-25-SP-STD-120-X-PHI	120VAC, 60Hz	0.39	47	1670	35, 33, 31	9 lbs.	X = Off white (W) or black (B)	9 in.
A-25-SP-STD-277-X-PHI	277VAC, 60Hz	0.20	55	1650	35, 33, 31	9 lbs.	X = Off white (W) or black (B)	9 in.
A-25-SP-SH-120-X-PHI	120VAC, 60Hz	0.39	46	1670	35, 33, 31	7 lbs.	X = Off white (W) or black (B)	5 in.
A-25-SP-SH-277-X-PHI	277VAC, 60Hz	0.20	54	1650	35, 33, 31	7 lbs.	X = Off white (W) or black (B)	5 in.

(1) Calculated sound pressure at 15, 20 and 25 foot distances based on non-reflective area. 60 dB(A) Sound Power Level, designed to meet ISO 3744 - engineering grade precision for determining sound power. Data independently verified by third party. Tests performed in-unit.

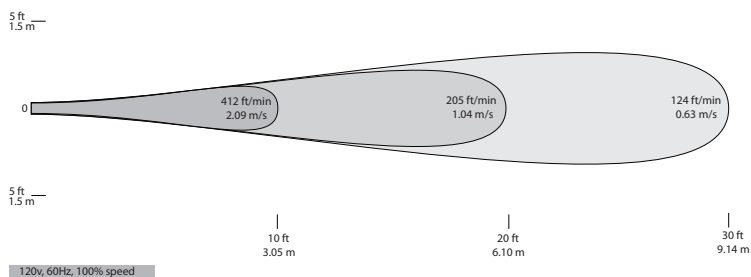
## Factory Installed Options

Item	Description
GUARD25	Intake grille: Phosphated steel coated in black plastic
BABS	Black ABS housing upgrade for increased chemical resistance. Applications such as machine shops or pools.

<b>Model:</b>	<b>Qty:</b>
Controls/Options:	Qty:

## PUREAIR EC

AIRIUSFANS.COM | 888-247-7327



PHI Coverage Guidelines			
Ceiling Height (ft)	Max Coverage 5 inch PHI (ft <sup>2</sup> )	Max Coverage 9 inch PHI (ft <sup>2</sup> )	Recommended Size (PHI, Nozzle)
~10	960	5200	5 inch PHI, Short
~15	640	3470	5 inch PHI, Short
~25	380	2080	9 inch PHI, Standard

**Housing:** PC/ABS, UL 94 5VA flame resistance.

**Motor:** 230mm, electrically commutated, thermally-protected axial motor by ebm-papst®. Operating temperature: -22°F (-30°C) to 122°F (50°C). No lubrication required, bearings are sealed.

**Power Cord:** 6 foot cord and plug provided for 100-130V fans, no plug for 200-250V.

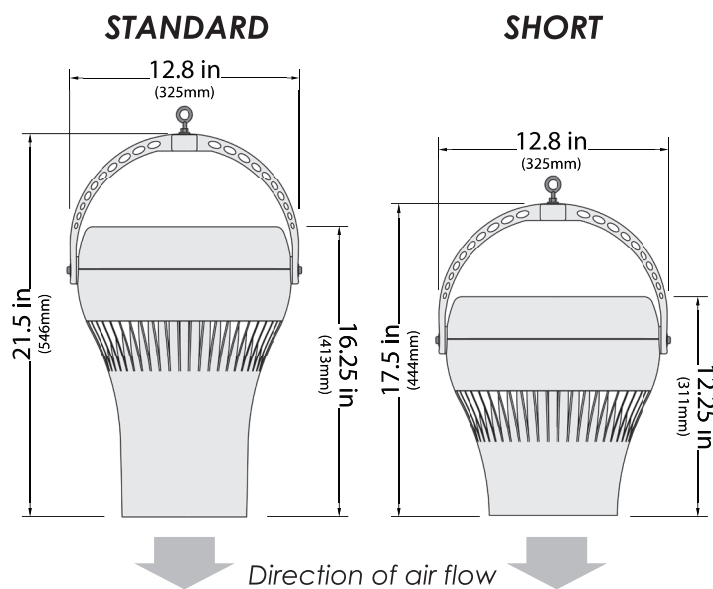
**Control Input:** Fixed speed.

**Stator:** Patented multi-vane stator significantly increases air throw for maximizing performance.

**PHI Cell:** 5 inch cell for short nozzle fans, 9 inch cell for standard nozzle fans.

**Safety Cable:** 6' length steel cable (fastened to body).

**Warranty:** 3 years parts and workmanship for fan.  
2 years parts and workmanship for PHI cell.



## Technical Specifications

Model	Input Power, 1 Ø	Amps	Watts	RPM	dB(A) <sup>1</sup>	Weight	Colors	PHI
A-15-EC-STD-100-130-X-PHI	100-130VAC, 60Hz	0.24	28	1170	47, 41, 37	9 lbs.	X = Off white (W) or black (B)	9 in.
A-15-EC-STD-200-250-X-PHI	200-250VAC, 60Hz	0.12	21	1260	47, 41, 37	9 lbs.	X = Off white (W) or black (B)	9 in.
A-15-EC-SH-100-130-X-PHI	100-130VAC, 60Hz	0.24	27	1170	47, 41, 37	7 lbs.	X = Off white (W) or black (B)	5 in.
A-15-EC-SH-200-250-X-PHI	200-250VAC, 60Hz	0.12	20	1260	47, 41, 37	7 lbs.	X = Off white (W) or black (B)	5 in.

(1) Calculated sound pressure at 5, 10 and 15 foot distances based on non-reflective area. 62 dB(A) Sound Power Level, designed to meet ISO 3744 - engineering grade precision for determining sound power. Data independently verified by third party. Tests performed in-unit.

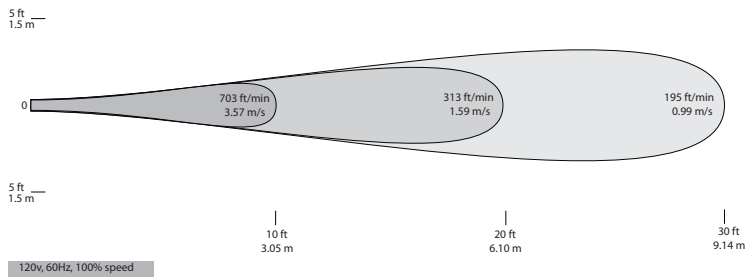
## Controls &amp; Factory Installed Options

Item	Description
GUARD25	Intake grille: Phosphated steel coated in black plastic
BABS	Black ABS housing upgrade for increased chemical resistance. Applications such as machine shops or pools.

<b>Model:</b>	<b>Qty:</b>
Controls/Options:	Qty:

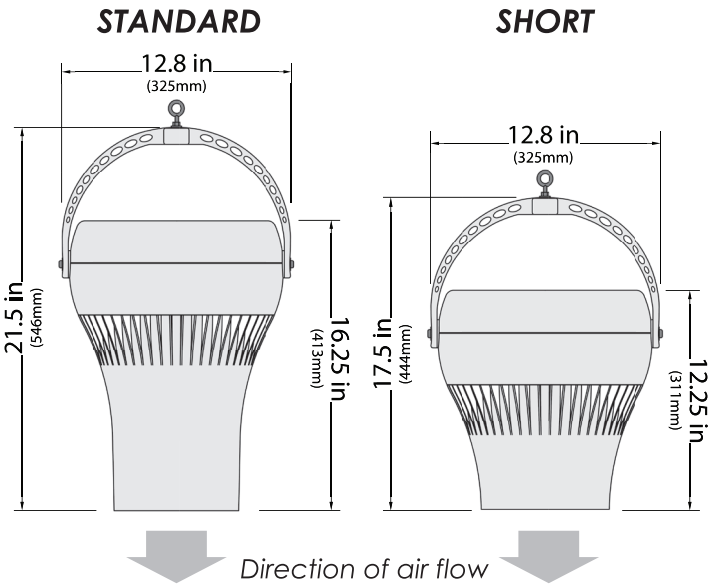
PUREAIR EC

AIRIUSFANS.COM | 888-247-7327



PHI Coverage Guidelines			
Ceiling Height (ft)	Max Coverage 5 inch PHI (ft²)	Max Coverage 9 inch PHI (ft²)	Recommended Size (PHI, Nozzle)
~10	960	5200	5 inch PHI, Short
~15	640	3470	5 inch PHI, Short
~25	380	2080	9 inch PHI, Standard

- Housing:** PC/ABS, UL 94 5VA flame resistance.
- Motor:** 230mm, electrically commutated, thermally-protected axial motor by ebm-papst®. Operating temperature: -22°F (-30°C) to 122°F (50°C). No lubrication required, bearings are sealed.
- Power Cord:** 6 foot cord and plug provided for 100-130V fans, no plug for 200-250V.
- Control Input:** Fixed speed.
- Stator:** Patented multi-vane stator significantly increases air throw for maximizing performance.
- PHI Cell:** 5 inch cell for short nozzle fans, 9 inch cell for standard nozzle fans.
- Safety Cable:** 6' length steel cable (fastened to body).
- Warranty:** 3 years parts and workmanship for fan.  
2 years parts and workmanship for PHI cell.



Technical Specifications

Model	Input Power, 1 Ø	Amps	Watts	RPM	dB(A) <sup>1</sup>	Weight	Colors	PHI
A-25-EC-STD-100-130-X-PHI	100-130VAC, 60Hz	0.54	41	1640	44, 42, 40	9 lbs.	X = Off white (W) or black (B)	9 in.
A-25-EC-STD-200-250-X-PHI	200-250VAC, 60Hz	0.3	40	1700	44, 42, 40	9 lbs.	X = Off white (W) or black (B)	9 in.
A-25-EC-SH-100-130-X-PHI	100-130VAC, 60Hz	0.54	40	1640	44, 42, 40	7 lbs.	X = Off white (W) or black (B)	5 in.
A-25-EC-SH-200-250-X-PHI	200-250VAC, 60Hz	0.3	39	1700	44, 42, 40	7 lbs.	X = Off white (W) or black (B)	5 in.

(1) Calculated sound pressure at 15, 20 and 25 foot distances based on non-reflective area. 69 dB(A) Sound Power Level, designed to meet ISO 3744 - engineering grade precision for determining sound power. Data independently verified by third party. Tests performed in-unit.

Controls & Factory Installed Options

Item	Description
GUARD25	Intake grille: Phosphated steel coated in black plastic
BABS	Black ABS housing upgrade for increased chemical resistance. Applications such as machine shops or pools.

Model:	Qty:
Controls/Options:	Qty: